

*Proposed Project
in search for Global Grant Sponsors*

“Helping to Diagnose”

to



SAN JUAN DE DIOS
HOSPITAL INTERZONAL ESPECIALIZADO
DE AGUDOS Y CRÓNICOS • LA PLATA

Primary Local Contact

Rotary 
Jean Thomson La Plata
District 4905



**CREATE HOPE
in the WORLD**

The Goal

The goal is to provide the Cardiology Service of the "San Juan de Dios" Hospital in La Plata with a portable echocardiography machine with a built-in transducer, suitcase and a transport cart. This grant will allow inpatients and outpatients to receive a rapid and efficient diagnosis, allowing not only treatment of complex and life-threatening pathologies, but also disease prevention.

The Beneficiary Entity

The Interzonal Specialized Acute and Chronic Patients Hospital "San Juan de Dios" is a public institution under the Ministry of Health of the Province of Buenos Aires. It is mainly oriented to the care of Thoracic-Cardiovascular and Pulmonary pathologies and Infectious Diseases.¹

This institution develops tasks of prevention, treatment and rehabilitation of health and also teaching and research activities. In addition to inpatient and outpatient care, it receives patients from its Emergency Room and referrals from other Hospital Centers. Throughout its history, it has been established as the place for referral of patients for the resolution of the most complex clinical and surgical cases at the provincial level.

Its Cardiology Service has 55 years of uninterrupted care, being one of the most prestigious and important in the area. This service has been the headquarters of the Postgraduate Program in Cardiology of the National University of La Plata since 1970 and is one of the Training Centers for Residents of the Province of Buenos Aires since 1980. It is also a Rotation Center for the training of doctors and nurses from other area's hospitals.

In the Cardiology Area, pathologies are resolved through medical, surgical or hemodynamic treatments, covering chronic, acute and congenital pathologies. As example, this Service performs coronary bypasses and mitral or aortic valve replacements; treats acute coronary syndromes and cases of endocarditis and places Stent implants, Amplatzer implants and transcatheter valve prostheses, in addition to prevention and medical treatments. In addition, this area works together (assisting or being assisted) with other Hospital services such as the Surgery, Hemodynamics and Patient Management areas, and even Pulmonology and Medical Clinic areas.

The Good to Donate

The function of electrocardiographs is to diagnose with imaging and they can also be used to assist in the application of treatments. For the selection of the type of equipment, companies that sell equipment with similar services were sought and the benefits and potential forms of use of all the options were consulted with the expert staff of the Hospital.

¹ More references on the official website of the Hospital (in Spanish): <https://www.ms.gba.gov.ar/sitios/hsanjuan/>

The equipment selected to donate is the LOGIQ e Pro, produced by General Electric². This equipment is designed to be transported (with a weight of only 4.6 kg) and its transport cart and case facilitate its use and storage. It has the possibility of incorporating various types of transducers, even a transesophageal probe. In our case, the donation will include a 3Sc-RS type transducer, optimal for cardiology use in adults.



LOGIQ e Pro



Transport cart with the equipment

Currently, the Hospital has a machine that allows similar uses in operational conditions and another in an obsolete state; but neither of the two is portable and cannot be transported from one service to another without running the risk of rupture and leaving it out of service. Despite this, right now the medical personal is forced to take this risk because the demand for studies cannot stop being covered, reaching an average of 20 studies per day.

The equipment will be purchased from Intec S.R.L., the only provider of this type of equipment in Argentina. Its maintenance is guaranteed by this provider through the guarantee and, once it is concluded, it will be done through the appropriate personnel of the Ministry of Health of the Province. The staff is already familiar with imaging diagnosis and treatment, so the equipment presents an improvement in technology without implying the need to train the staff that will use it.

The Target Population

The "San Juan de Dios" Hospital is located in the capital city of the Province of Buenos Aires, which has 17 million inhabitants in its territory and 9 million in the area called "Conurbano Bonarense", being the area with the fewest resources and the largest demand for medical care. In its capacity as Interzonal, the "San Juan de Dios" Hospital responds to the demands of this area, also serving patients from the rest of the Province, patients from other provinces of the country and patients from neighboring countries, such as Paraguay, Uruguay, Chile and Bolivia.

² More information (in Spanish), on the provider's page: <https://intecsrl.com.ar/poc/logiq-e-pro/> and at the end of this document is attached the equipment brochure (in English)

This equipment will cover the demand for different studies, both for internal patients and outpatients, and its portability will allow assistance to other sectors and rapid diagnoses and treatments in the case of patients in critical situations, such as emergency admissions or referrals from other hospitals.

Although it is not possible to have an estimate in the number of uses in the case of hospitalizations, only in the case of outpatient consultations this Hospital attended 53,400 patients in the year 2022.³

The Impact

In Argentina, cardiovascular diseases are the first cause of death due to non-communicable medical diseases, they are ahead of all types of cancer. By "Helping to Diagnose" we will be able to optimize care and prevention for all states of complexity within this field and its application in the "San Juan de Dios" Hospital in La Plata will cover a large territorial area.

We will create greater diagnostic opportunities and increase the speed with which treatment and cure are available. And, in addition to diagnosing and curing patients, this equipment will be part of the teaching of undergraduate and postgraduate health professionals, thus obtaining more professionals who will be "Helping to Diagnose" in other regions; not only in Argentina, but of all of Latin America.

Video

You can watch the interview with the Head of the Cardiology Department of the "San Juan de Dios Hospital" at: <https://www.youtube.com/watch?v=ZwrNYEICDQI> (audio in Spanish, subtitles in English)

³ To collect the necessary information for the subsequent evaluation and monitoring, we have the commitment of the heads of each service where the equipment will be used. Cardiology: Dr. Guillermo Godoy; Hemodynamics: Dr. Ignacio Rifourcat, Medical Clinic: Dr. Camilo Martinez; Intensive Care: Dr. Ariel Mantis; Pulmonology: Dr. Gastón Pellegrino and Cardiovascular Surgery: Dr. Gabriel Basso.

The Grant

The Global Grant "Helping to Diagnose" is in the amount of US\$ 35,000, it is already uploaded to the My Rotary page and its number is GG 2353057. The primary local contact is the Jean Thomson La Plata Rotary Club. The project data will also be uploaded to the page of the International Fair of Rotary Projects of Foz do Iguaçu.⁴

All Rotary Clubs in the La Plata area have committed to participate, each with a contribution of US\$500, and District 4905, of which they are all part, contributes US\$5,000 from its Designated District Fund.

Contributions	Amount	Contribution TRF	TOTALS
Club Jean Thomson La Plata	U\$S 500	-	U\$S 500
Club City Bell	U\$S 500	-	U\$S 500
Club Berisso	U\$S 500	-	U\$S 500
Club La Plata	U\$S 500	-	U\$S 500
Club La Plata Meridiano Vo	U\$S 500	-	U\$S 500
Club La Plata Norte	U\$S 500	-	U\$S 500
Club La Plata Sur	U\$S 500	-	U\$S 500
Club El Dique - Tolosa	U\$S 500	-	U\$S 500
Club Los Hornos	U\$S 500	-	U\$S 500
Manuel B. Gonnet	U\$S 500	-	U\$S 500
E-Club del Conurbano del D. 4905	U\$S 500	-	U\$S 500
DISTRICT 4905 (DDF)	U\$S 5000	U\$S 4000	U\$S 9000
		Total amount COLLECTED	U\$S 14500
		Total value of the project	U\$S 35000
		MISSING	U\$S 20500

⁴ Official Page of the Fair: <https://www.rotaryprojectsfair.org/>



Simple. Fast. Precise.
Empowering Point of Care.

The LOGIQ™ *e* Pro Edition Ultrasound System



Challenges in Point of Care

Acute intervention. Chronic patient management. Needle guidance. Action-oriented patient care. When physicians who use ultrasound at the point of care met with GE scientists, they asked for a system designed for immediate-action workflow, bright-room operation, precise guidance and general imaging to advanced echocardiography (TTE or TEE).

Designed for Point of Care

See clearly. See quickly. Guide precisely. Those were the values users requested that drove the creation of the LOGIQ *e* Pro Edition. Its imaging engine comes from GE's flagship console systems, delivering crisp images in a compact package. Point of care specific software and transducers help to see the needle to administer a block or perform an aspiration quickly, even in the obese patient.

Simple

The LOGIQ *e* Pro Edition's specialized software and transducers help you keep up with treatment advances and simplify interventions. Terrific right-out-of-the-box imaging – optimized for Point of Care – makes the technology transparent so that you can focus on the patient.

- **Simple consistency.** Patient Follow-up Tool with Fusion helps ensure technical consistency from exam-to-exam to help clinical conclusions not be clouded by inconsistent technique.
- **Simple comparison.** Sometimes comparing left-to-right or before-and-after is the key to clinical decision making. Simultaneous Split Screen makes the comparison nearly automatic.

Fast

Whether you're measuring seconds for clinical reasons, or you're measuring productivity for business reasons, the LOGIQ *e* Pro Edition was built to help make you fast. The highly portable system easily moves from patient to patient.

- **Imaging on the go.** Compact and battery-operated, the LOGIQ *e* allows flexibility in moving from patient-to-patient.
- **Document on the fly.** Save images to a memory stick or network devices. And choose between PACS and EMR-compatible formats.

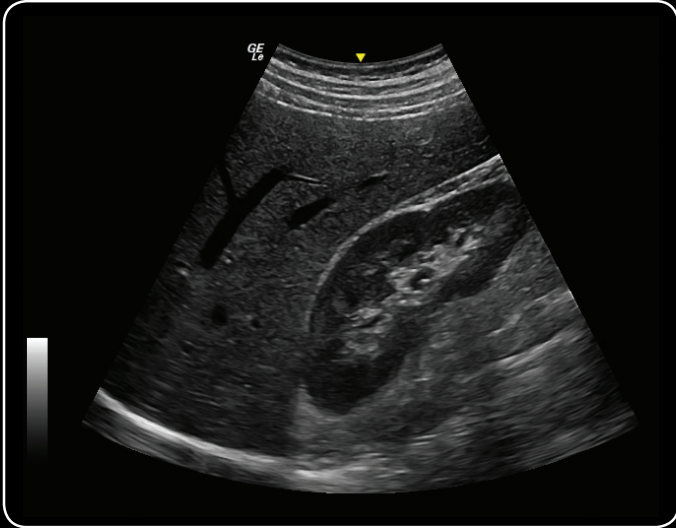
Precise

Diagnostic or guidance, image quality matters. Crisp imaging is at the core of the LOGIQ *e* Pro Edition.

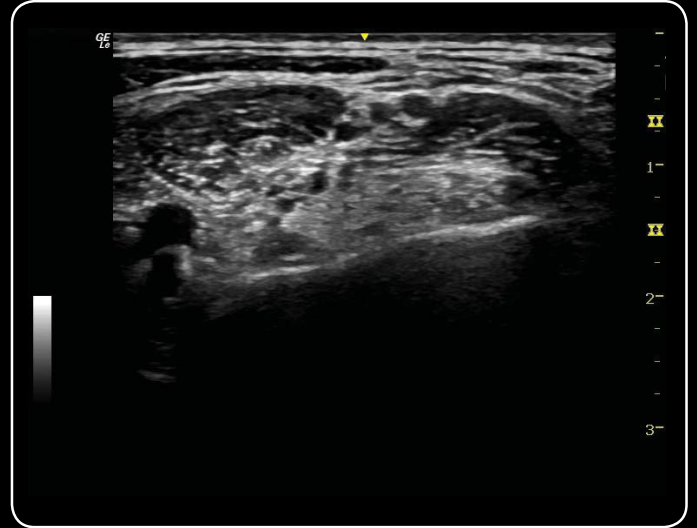
- **Tissue differentiation matters.** The LOGIQ *e* Pro Edition imaging engine is separately optimized for each Point of Care application.
- **See the needle tip.** The LOGIQ *e* Pro Edition uses two different types of ultrasound: One for tissue and one for metal. This helps the needle stand out and allows separate control of the needle appearance.
- **Image almost the whole body... and almost any body.** A wide variety of transducers offer versatility for applications from head to heart to toe, even in obese patients.
- **See in 3D.** Use any transducer¹ to show anatomical relationships intuitively with Easy3D.



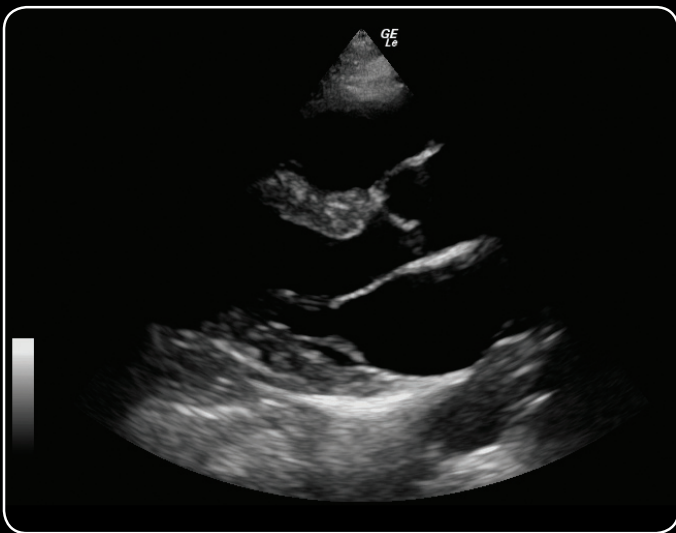
¹"Any transducer" applies to all transducers that have been validated on the LOGIQ *e* Pro Edition.



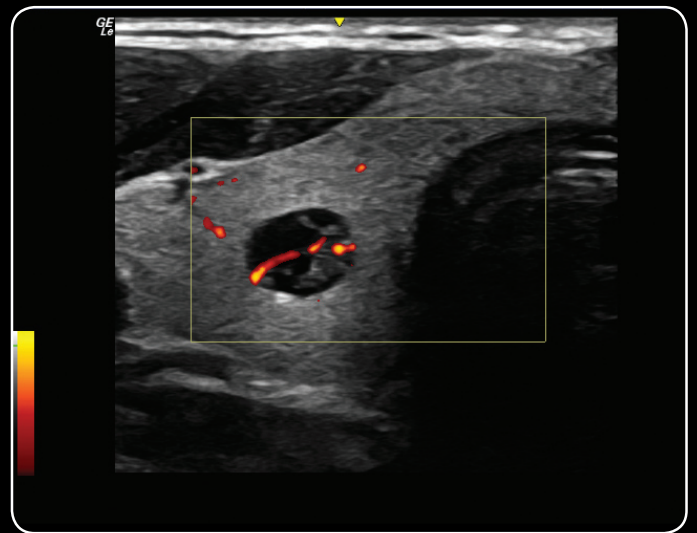
Superior liver and kidney definition demonstrating the area of Morison's pouch using the 4C



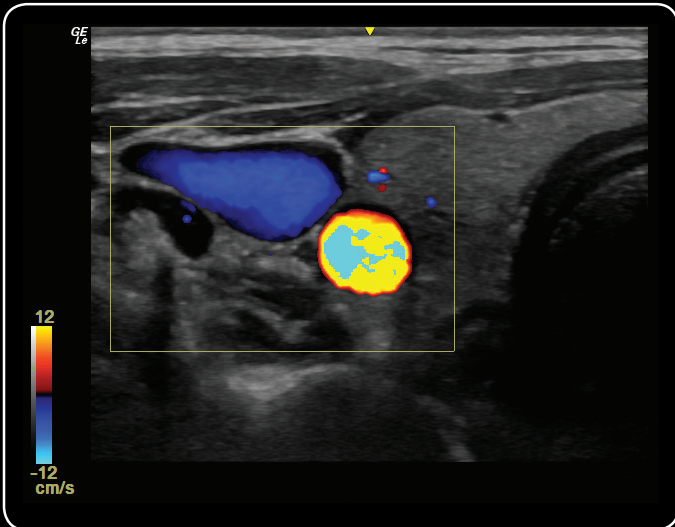
Brachial plexus nerve at the interscalene level is clearly delineated between the scalene muscles while utilizing the 12L



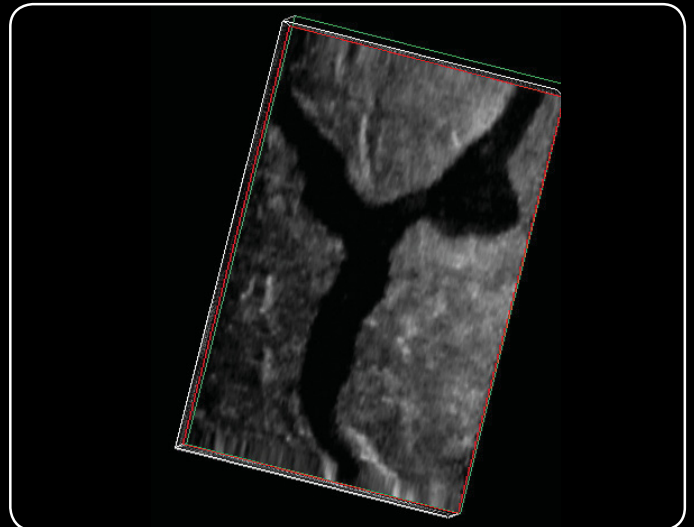
Excellent contrast resolution is identified scanning the heart using the 3Sc



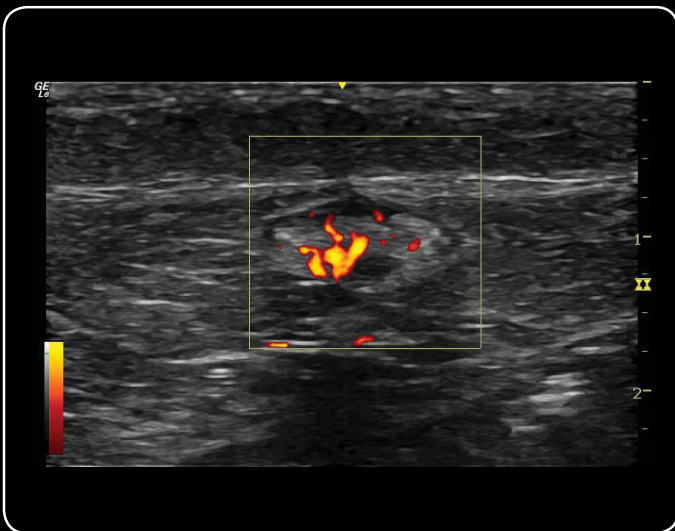
Intricate vascularity is demonstrated within a thyroid nodule using PDI on the 12L



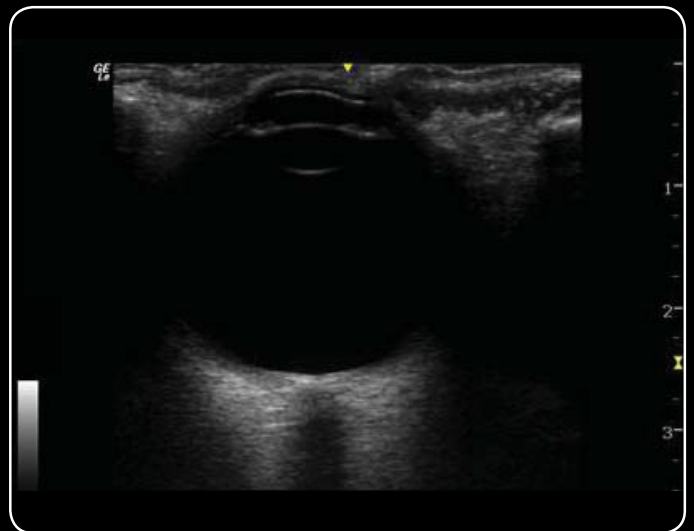
Excellent B-mode image quality is maintained even when color Doppler is activated on the 12L



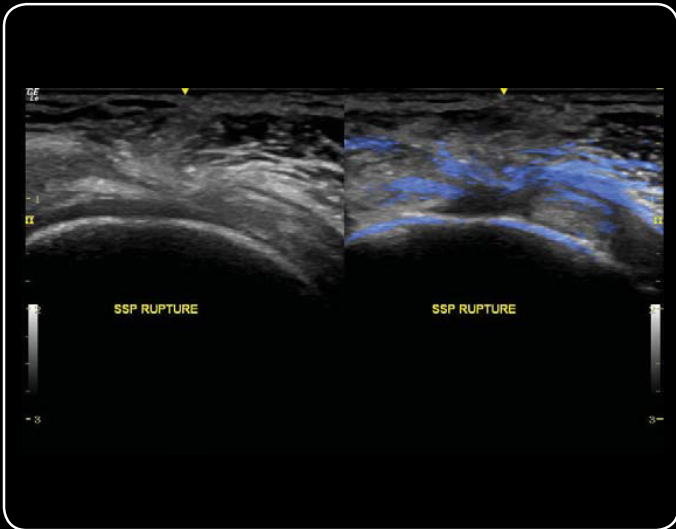
Ability to see the varicose vein in multiple dimensions is easily achievable using 3D and 12L



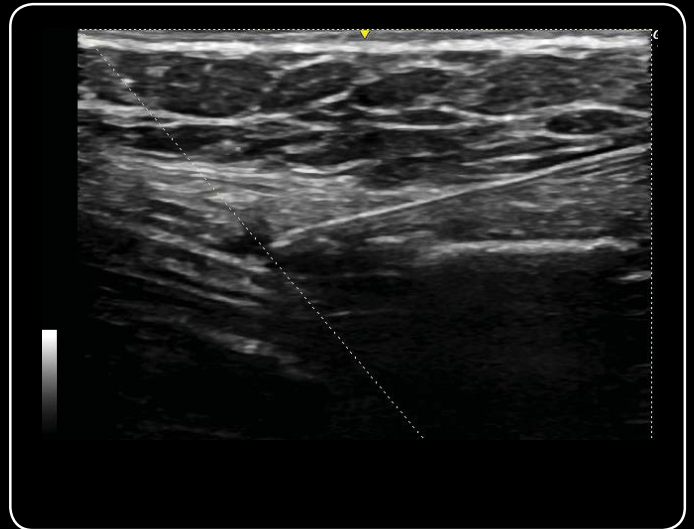
Detecting lymph node vascularity is simple with the low flow capability of the 12L Power Doppler



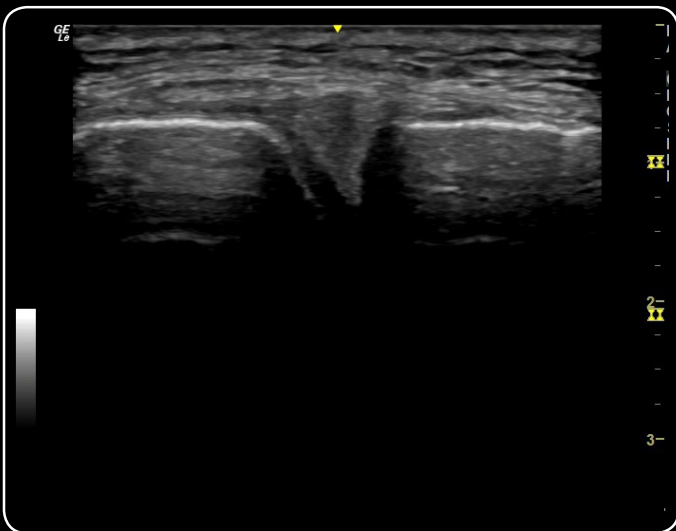
Visualization of the optic nerve sheath is well delineated utilizing the 12L



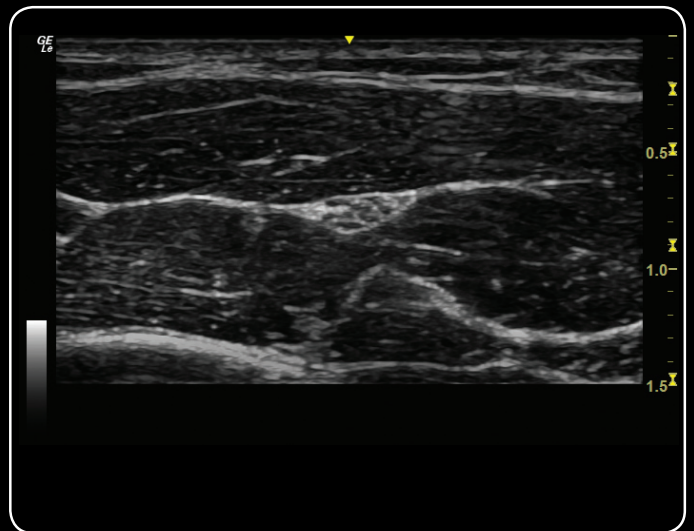
Accurate comparison in musculoskeletal imaging has been taken to the next level with the addition of Fusion to the daily workflow



Needle and needle tip are clearly demonstrated approaching the transverse abdominus muscle for TAP block procedure



Lateral meniscus (semilunar cartilage) clearly delineated with the 12L probe



Exceptional detail of the fascicles within the axillary nerve are visualized with the high resolution capabilities of the L8-18i probe

About GE Healthcare

GE Healthcare provides transformational medical technologies and services to meet the demand for increased access, enhanced quality and more affordable healthcare around the world. GE (NYSE: GE) works on things that matter - great people and technologies taking on tough challenges. From medical imaging, software & IT, patient monitoring and diagnostics to drug discovery, biopharmaceutical manufacturing technologies and performance improvement solutions, GE Healthcare helps medical professionals deliver great healthcare to their patients.

GE Healthcare
9900 Innovation Drive
Wauwatosa, WI 53226
U.S.A.

www.gehealthcare.com

Data subject to change.

©2016 General Electric Company . July 2016/JB41571XX

Not all features or specifications described in this document may be available in all probes and/or modes.

All probes names include the -RS in the name to identify the connector.

GE Medical Systems Ultrasound & Primary Care Diagnostics, LLC, a General Electric Company, doing business as GE Healthcare.

GE, GE Monogram and LOGIQ are trademarks of General Electric Company or one of its subsidiaries.

The LOGIQ *e* Pro Edition is a configuration of the LOGIQ *e* ultrasound system.

GE Healthcare, a division of General Electric Company.

Reproduction in any form is forbidden without prior written permission from GE. Nothing in this material should be used to diagnose or treat any disease or condition. Readers must consult a healthcare professional.

