



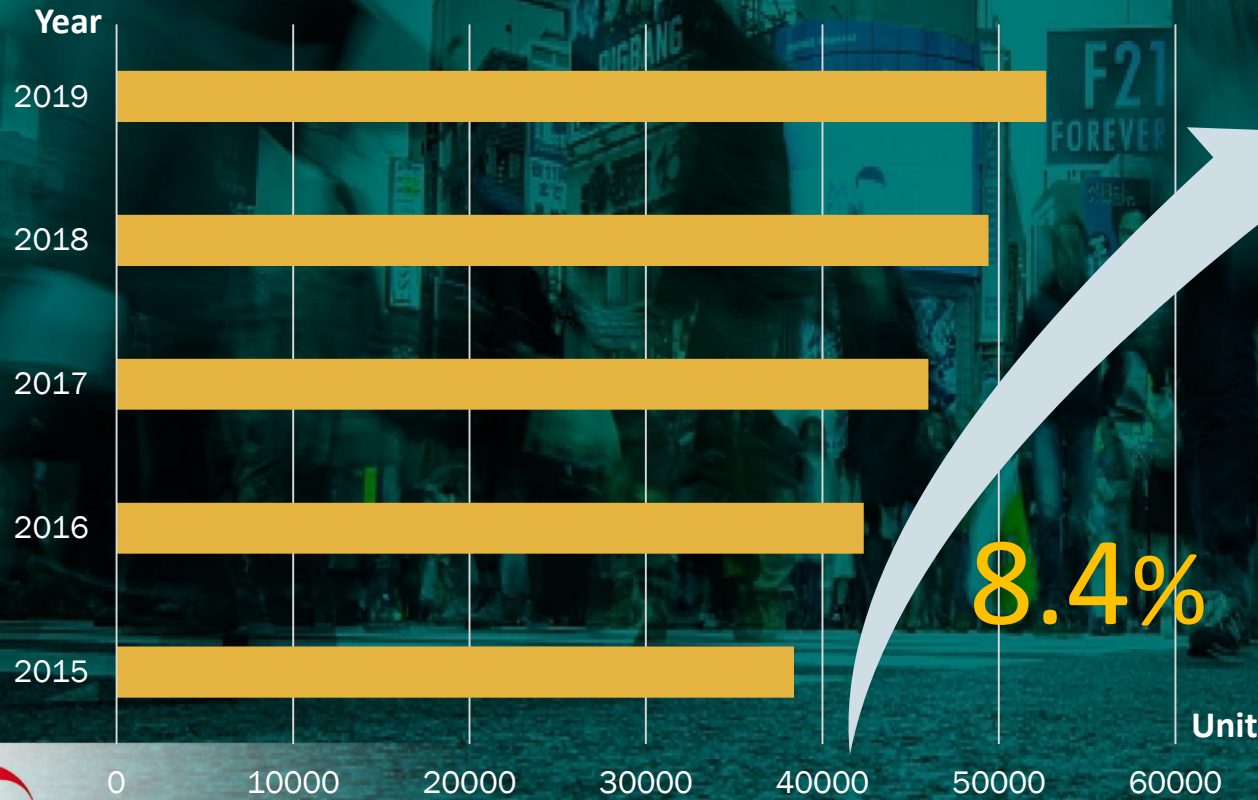
SonoScape P Series

P20 Product Presentation

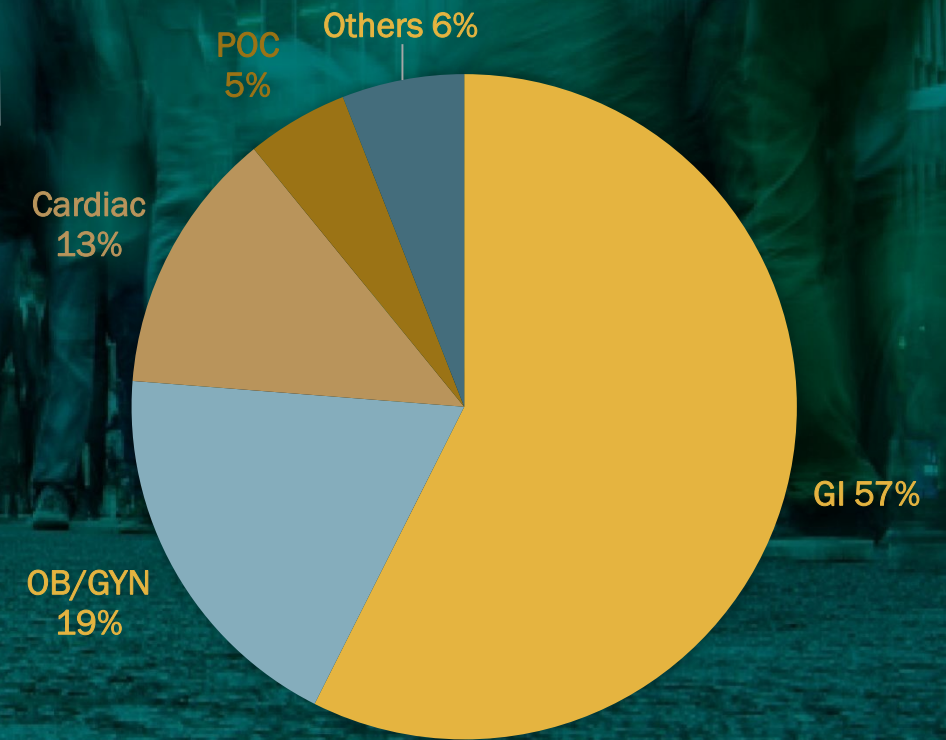
Value and Significance

Mid-Range Ultrasound Market

MID-RANGE MARKET FORECAST



MID-RANGE MARKET SIZE BY APPLICATION



Mid-Range Ultrasound Requirement

Clear 2D Image

Good Penetration

Flow Sensitivity

Easy to Use

Quick Response

With Battery

Large Display

Slim/Smart Design

Sensitive Touch

Adjustable Panel

Price Performance

Multiple Interface



P20 Market Position

Market

Mid-Range Market

Chain Hospitals
Policlinics
Share Service



Excellent Image

μ -Scan +
PIH
Spatial Compound
Frequency Compound

Appli-
cation

GI Market
OB/GYN Market
POC Market



Multiple Solution

Single Crystal
Wide bandwidth
Intra-operative
MPTEE





Extraordinary Image Quality

Value without Compromise




Enhance Tools for Optimized Care

Expand Your Clinical Needs



User-friendly Design

Comfort and Productivity



**Extraordinary
Image Quality**

Value without Compromise

μ -Scan +

The new generation μ -Scan imaging technology gives you better image quality by reducing noise, improving signal strength and improving visualization.



Contrast

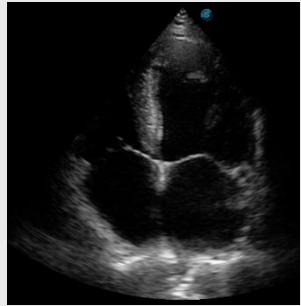
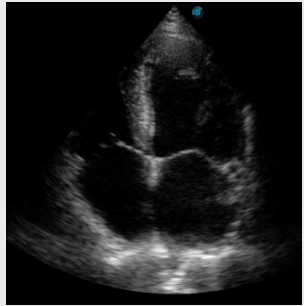


Edge

Speckle



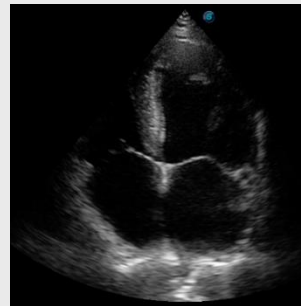
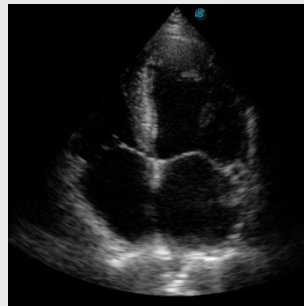
μ-Scan



μ-Scan off

μ-Scan on

μ-Scan +



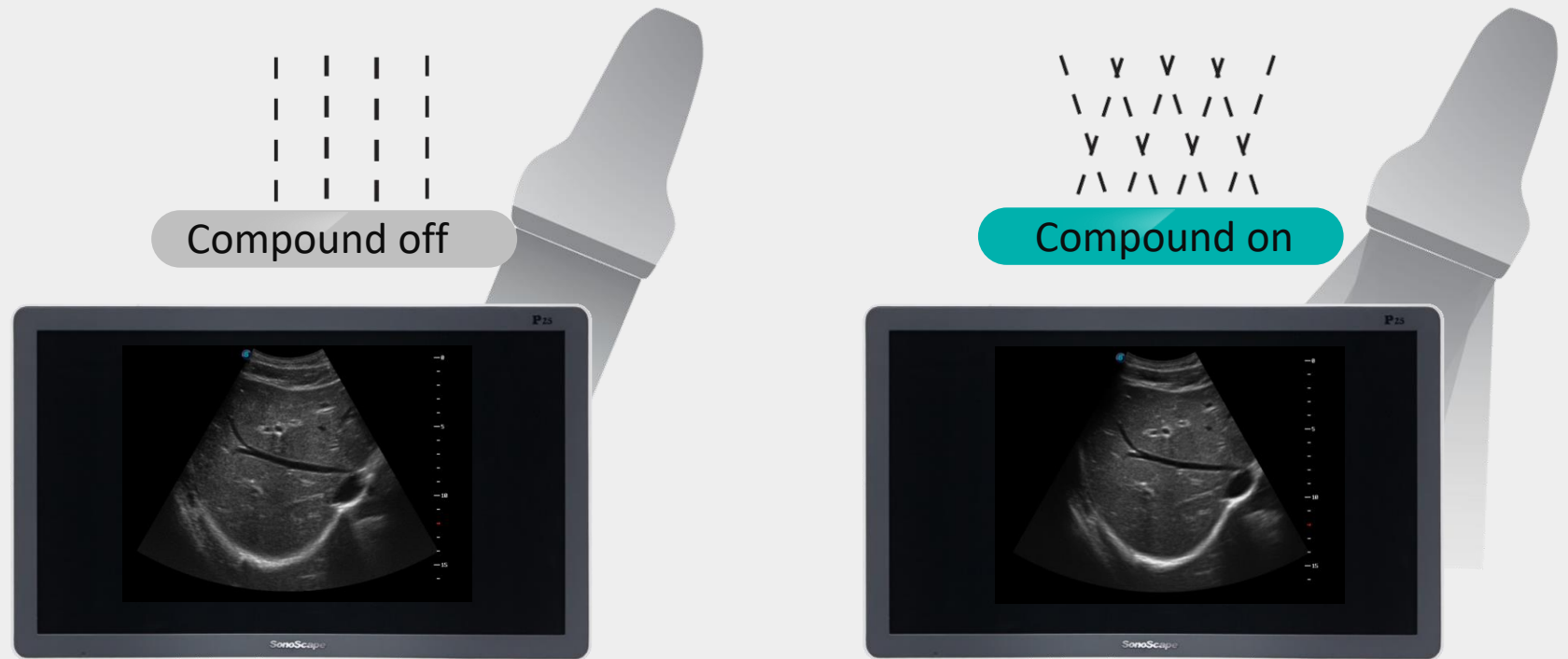
μ-Scan off

μ-Scan on



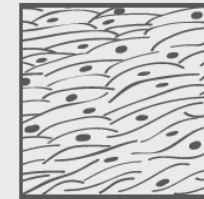
Spatial Compound Imaging

Spatial Compound Imaging utilizes several lines of sight for optimal contrast resolution, speckle reduction and border detection, with which P20 is ideal for superficial and abdominal imaging with better clarity and improved continuity of structures.

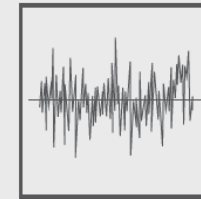


Dynamic Color

Dynamic color improves upon already existing color Doppler technologies for a clearer capture of color flow and detailed visualization of even tiny veins with lower velocities.



Tissue

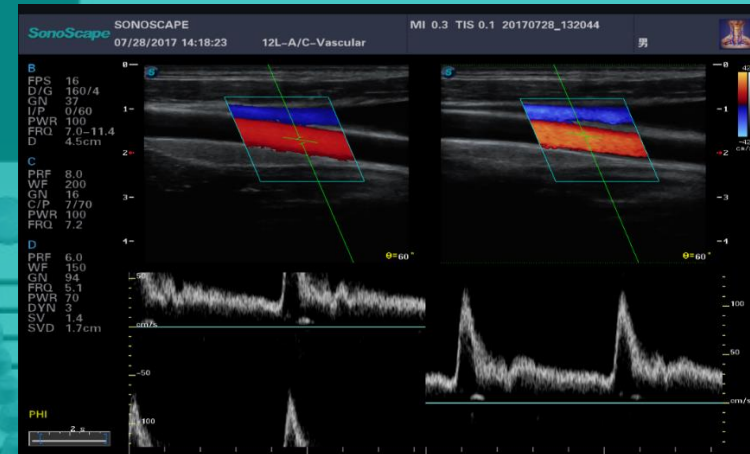


Noise



Color





Auto Optimization



**Enhance Tools for
Optimized Care**

Expand Your Clinical Needs

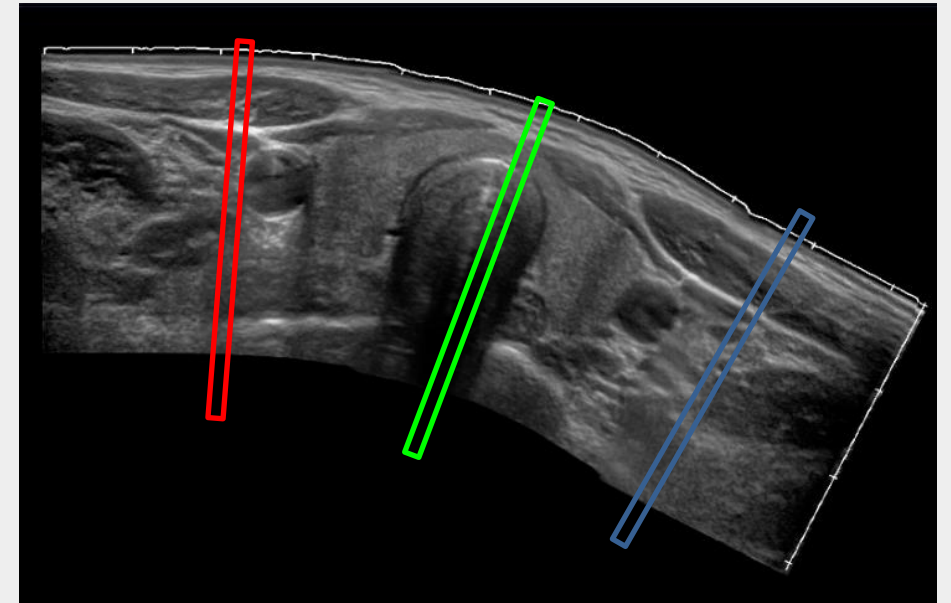
C-xlasto Imaging for GI

C-xlasto Imaging enables comprehensive quantitative elastic analysis. Meanwhile, it is supported by multiple probes to ensure good reproducibility and highly consistent quantitative elastic results.



Real-time Panoramic

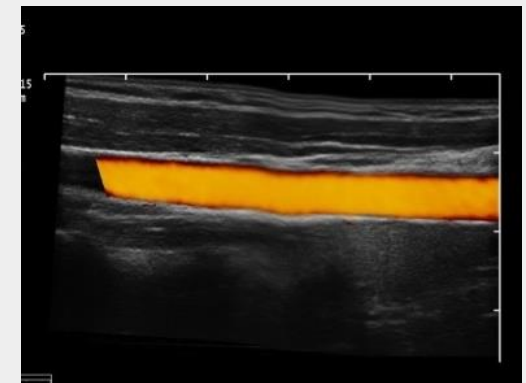
With the combination of color flow and real-time panoramic, visualizing the blood flow of an entire vein or artery is now an easy task. Accomplished in real-time for the convenience of the sonographers, any mistake can also be easily back tracked and corrected without interrupting the scan.



Panoramic for convex



Panoramic for CFM



Panoramic for DPI

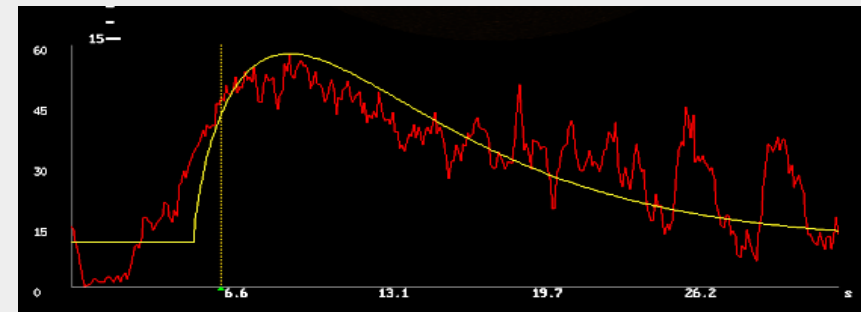
Contrast Imaging

The contrast agents provide a loud signal reflection, giving a more enhanced image of difficult-to-view blood flow. The Dynamic Acoustic Control feature of SonoScape Contrast Imaging provides image quality with a smaller agent dose.



- **TIC (Time intensity curve)**

Up to 8 TIC curves as quantitative tool to measure contrast density over the time.



C-xlasto Imaging for Gynecology

C-xlasto imaging facilitates analysis and documentation of tissue stiffness to improve detection and visualization of tumors. Predominately used only in linear probes, SonoScape's new transvaginal probe for gynecology is breaking the mold and expanding elastography applications.



S-Live

S-Live allows for detailed visualization of subtle anatomical features, thereby enabling intuitive diagnosis with real-time 3D images and enriching patient communication.



S-Depth

S-Depth can automatically display the near-far relation from transducer to target, represented by a smart designed color coding. It helps doctors to judge the spatial relationship on real-time 3D images.



S-Live Silhouette

S-Live Silhouette is a unique transparent volume image for a more comprehensive internal and external view of the anatomy and provides more abundant diagnostic information for the clinic.



Skeleton mode

Skeleton Depth

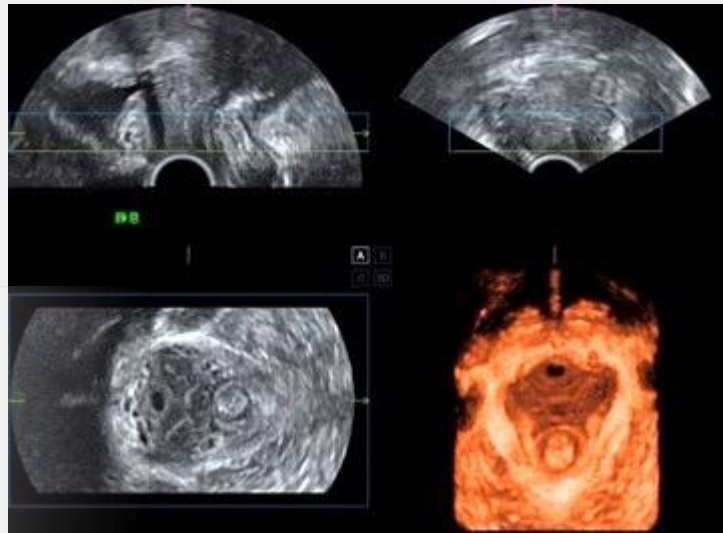
S-Live Silhouette
for skeleton

S-Live Silhouette for surface

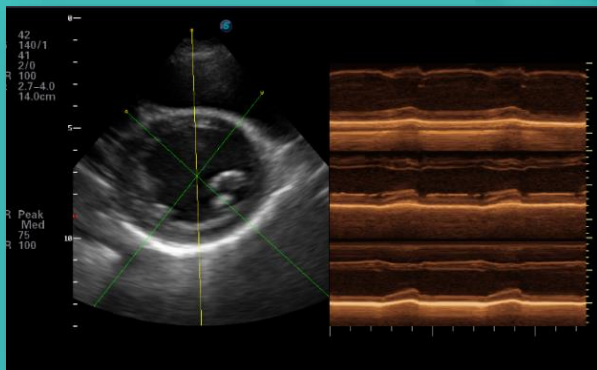
S-Live Silhouette
for AVC

Pelvic Floor 4D

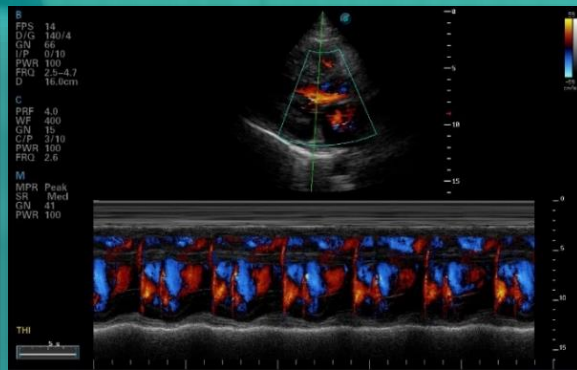
Trans-perineal 4D pelvic floor ultrasound can provide useful clinical values in assessing the vaginal delivery impact on the female anterior compartment, judging whether the pelvic organs are prolapsed or not and the extent, determining if the pelvic muscles were torn accurately.



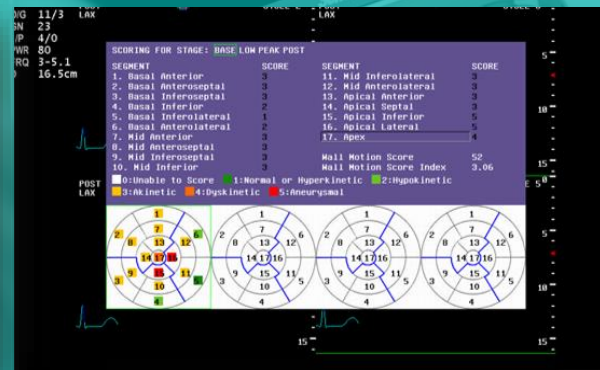
Cardiac Function Package



Anatomical M-mode



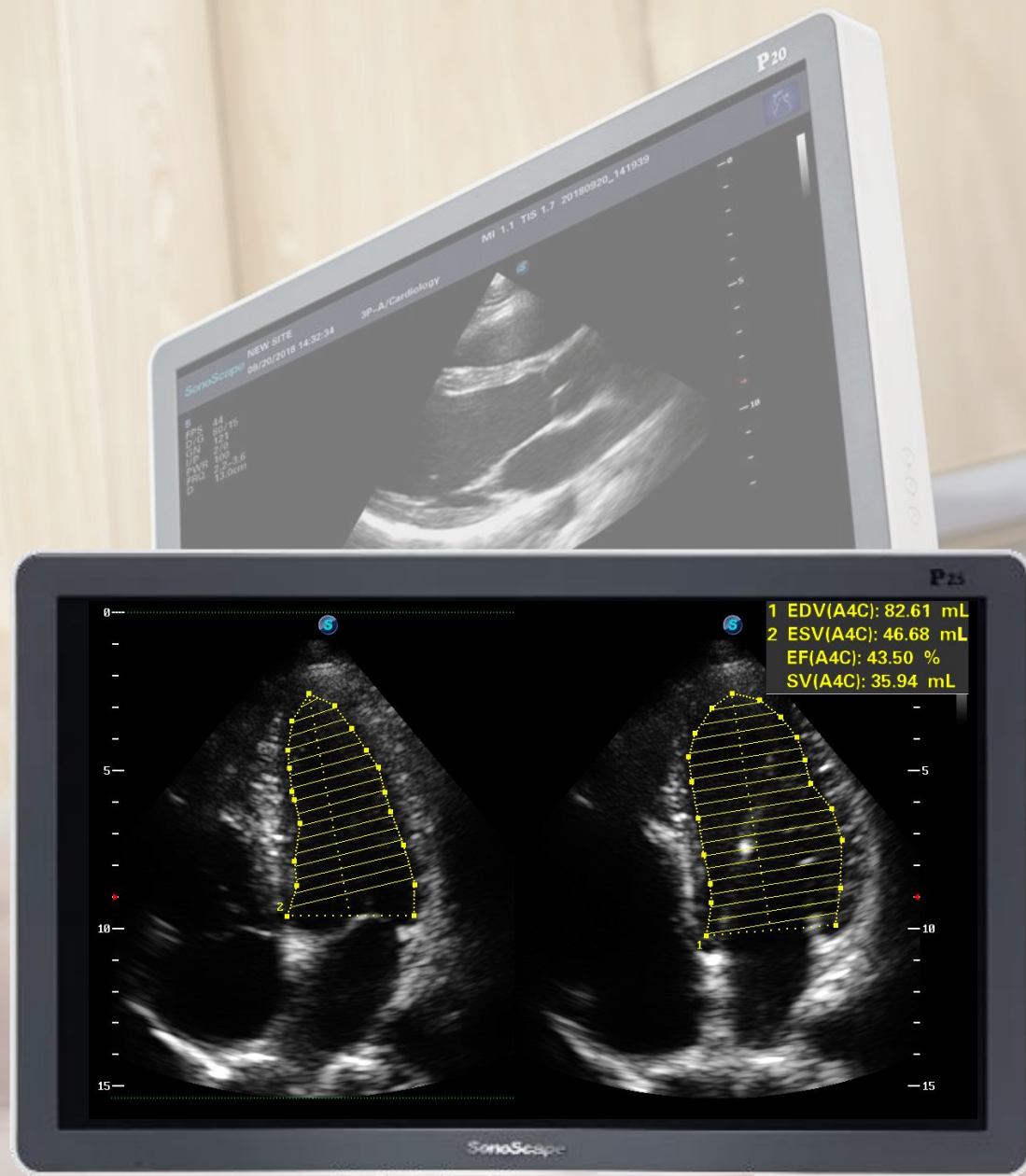
Color M mode



Stress echo

Auto EF

To recognize myocardial intima during the diastolic and systolic period and calculate the ejection fraction automatically.



Vis-Needle

Vis-Needle is realized by ultrasound beam steering and deflection. It improves the visualization of the needle shaft and needle tip in the tissue to minimize harm to the surrounding tissue, increasing the initial success rate and lowering the risk for needle puncture.





User-friendly Design

Comfort and Productivity

Comfort and Productivity Lies on Design

21.5 inch

High resolution LED display for comfort adjustment

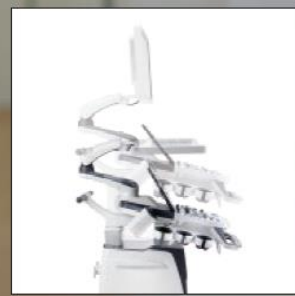


13.3 inch

High-definition touch screen, anti-glare, easy to control



Comfort and Productivity Lies on Design



Height-adjustable control panel



Large capacity built-in battery



Rotatable control panel



Five probe connectors



Multi-stage temperature control gel warmer



Cable management holder



Extraordinary Image Quality

Value without Compromise



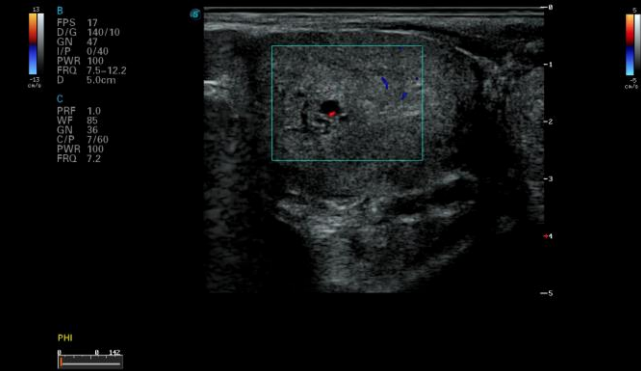
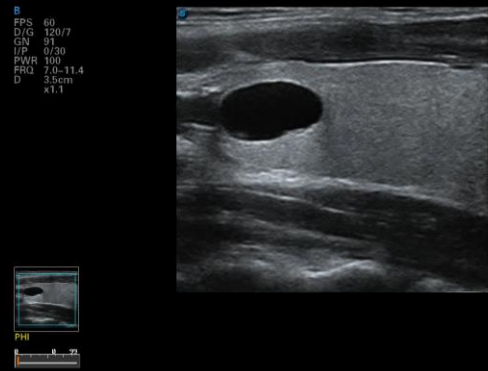
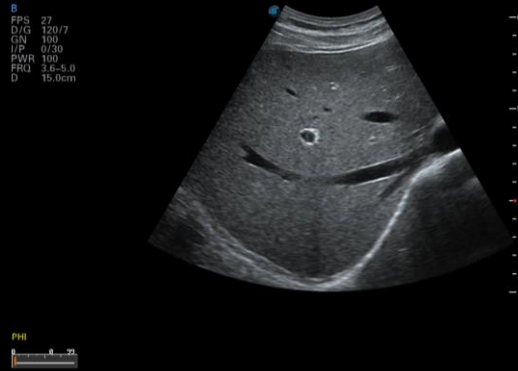
Enhance Tools for Optimized Care

Expand Your Clinical Needs



User-friendly Design

Comfort and Productivity



Key Points Presentation

Design

Benefit

Reduces user tiredness through reinforcement of mobility and usability

Compact Design

- Weight (86kg)
- Small foot print (518 x 751 x 1,680)

Ergonomic Design

- Articulated Arm
- Height Adjustable Control Panel
- Rotatable Control Panel
- Touch Screen

Easy of Use

Benefit

Beginner can use easily, time saving during diagnosis

Workflow

- Auto Optimization
- Auto Color

Auto Features

- Auto IMT
- Auto EF
- Auto NT
- Auto Face
- AVC Follicle

Image Quality

Benefit

Easy diagnosis due to good image quality

Image processing

- μ -Scan +
- Spatial Compound
- PIH
- Dynamic Color

Transducer

- 3C-A / C1-6
- S1-5
- 12L-A / 12L-B
- 6V1 / 6V3 / 6V7
- VC6-2 / VE9-5

Optimization

Benefit

Provides best solution for diagnosis in each application

OB/GYN

- 3D/4D
- S-Live / S-Live Silhouette
- Pelvic Floor 4D
- C-elasto for Gynecology

GI

- Panoramic
- C-elasto for GI
- Contrast Imaging
- Vis-Needle

Target Market: GI (Share Service)

Recommendation



3C-A



L742



6V3



- μ -Scan +
- Spatial Compound Imaging
- Dynamic Color
- Auto Optimization

- 1 **Extraordinary 2D Image Quality** with the latest μ -Scan +, providing the excellent image
- 2 **Comprehensive Software Package** with C-elasto, Vis-needle and Panoramic imaging
- 3 **Automatic Function** Easily accomplish high efficiency with one click automation

Target Market: GI (Share Service + CV)

Recommendation



3C-A



L742



3P-A



- μ -Scan +
- Spatial Compound Imaging
- Dynamic Color
- Auto Optimization

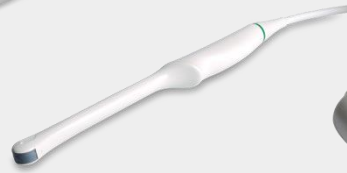
- 1 **Extraordinary 2D Image Quality** with the latest μ -Scan +, providing the excellent image
- 2 **Comprehensive Software Package** with C-elasto, Vis-needle and Panoramic imaging
- 3 **Basic CV Tools** for your solution with anatomic M mode, color M, TDI and so on.

Target Market: OB/GYN

Recommendation



3C-A



6V3

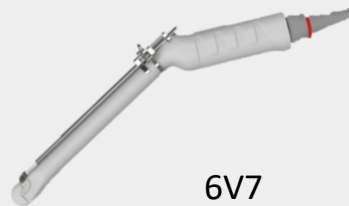


VC6-2



- Wide-bandwidth Convex
- 193° Endocavity Probe
- μ -Scan + with 4D
- S-Live and S-Live Silhouette

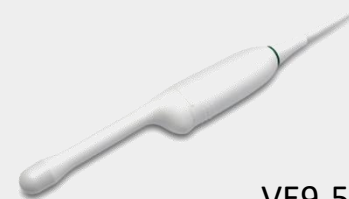
- 1 **Extraordinary 2D Image and Color Sensitivity** with the latest μ -Scan + and dynamic color Doppler technology
- 2 **Sophisticated 4D Software Package** with S-Live, S-Depth, S-Live Silhouette and pelvic floor 4D
- 3 **Different Probes Solutions** to break the mold and expand the OB/GYN applications



6V7



6V3A



VE9-5

Target Market: Intra-operative

Recommendation



1012



C613



- μ -Scan +
- Spatial Compound Imaging
- Dynamic Color
- Vis-Needle

- 1 **Extraordinary 2D Image and Color Sensitivity** with the latest μ -Scan + and dynamic color Doppler technology
- 2 **Automatic Function** Easily accomplish high efficiency with one click automation
- 3 **Different Probes Solutions** to break the mold and expand the intraoperative applications



12LI-A



12LT-A



6CT-A



6CI-A

SonoScape



Distribuidor Exclusivo
www.aplimed.com.ar - info@aplimed.com
(011) - 4761--1089